



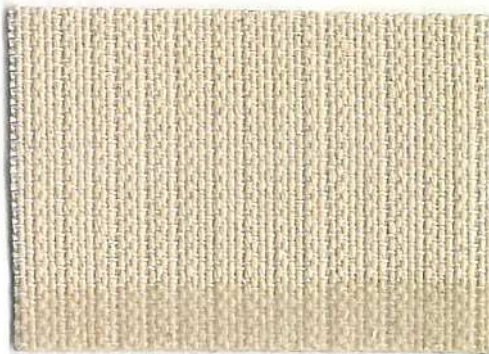
FILTRI - FELTRI PER CARTIERE - FELTRI E NASTRI PER L'INDUSTRIA ALIMENTARE - TESSUTI INDUSTRIALI
 10060 VILLAR PELLICE (TO) ITALY - Piazza Jervis, 1 - Tel. / Fax 0039 (0121) 93.07.10 / 93.02.50
 E-MAIL info@crumiere.it web site www.crumiere.it
 P.IVA/C.F. 04892610017
 Iscrizione Albo Soc. Coop. Mutualità prevalente N. A156641

H 9 V



- Constitute:	Needled felt
Batt/fibers	Polyester 100%
structure	Polyester 100%
- Thickness:	4 mm
- Density:	0,22 gr/cm ³
- Working temperature:	about 150°C
- Resistance lengthwise	100 daN/5cm
crosswise	100 daN/5cm
- Use:	The cotton-polyester belt can be used for oven feeder.

P 120 FC



- Constitute:	
lengthwise	POLYESTER 100% (35% on total)
crosswise	COTTON 100% (65% on total)
- Seamless possible dimension:	
lengthwise	from mm 1.000 to mm 11.000
crosswise	Max mm 4.000
- Thickness:	2 mm
- Weight:	1.150/1.200 gr/m ²
- Envelopment diameter:	nose
- Working temperature:	about 100°C
- Resistance lengthwise	370 kg/5cm
crosswise	290 kg/5cm
- Edge:	plastification – 10/20 mm PU
- Use:	<ul style="list-style-type: none"> -The cotton-polyester belt features an high-tenacity polyester multifilament yarn for the lengthwise weave. - It is suitable for rotary machines, rotary presses and pastry-bag machines for biscuit, as oven feeder belts in bread factories, particularly for heavy-duty work conditions (higher temperatures, very fatty products, greater tractions stress). - It can be supplied on request in a closed seamless loop.

P 120 NT



- Constitute:	
crosswise	COTTON 100%
lengthwise	COTTON 60% - POLYESTER 40%
	On the total Cotton 86% - Polyester 14%
- Seamless possible dimension:	
lengthwise	from mm. 1.000 to mm 10.000 - $\pm 1\%$
crosswise	Max mm. 4.500 - $\pm 1\%$
- Thickness:	about 2,4 mm
- Weight:	1.200/1.250 gr/mq.
- Envelopment diameter:	nose
- Working temperature:	about 100°C
- Resistance crosswise	290 kg./5cm
lengthwise	370 kg./5cm
- Edge:	plastification – 10/20 mm PU – loom edge
- Use:	<p>-The cotton-polyester belt can be used for rotary machines, rotary presses and pastry-bag machines for biscuit, as oven feeder belts in bread factories.</p> <p>-It has outstanding resistance and dimensional stability for perfect removal of the biscuit.</p> <p>- It can be supplied on request either by the piece of woven in a closed seamless loop to avoid problems related to stiffness and shorter life of the gluing and stitching areas.</p>

P 130 NOMEX



- Constitute:	
lengthwise	COTTON 100%
crosswise	Polyester 60% - Nomex 40%
	On the total Cotton 60% - Polyester 24% - Nomex 16%
- Seamless possible dimension:	
lengthwise	da mm. 1.000 a mm 10.000
crosswise	Max mm. 4.000
- Thickness:	2,8 mm
- Weight:	1.600 gr/mq.
- Envelopment diameter:	nose 10 mm not less
- Working temperature:	about 160°C
- Resistance lengthwise	290 kg./5cm
crosswise	370 kg./5cm
- Edge:	plastification – 10/20 mm PU
- Use:	Cotton-Nomex belt suitable for rotary, rotary moulder for biscuits, as well as oven feeder belts with high temperatures. Great resistance and dimensional stability, perfect biscuit extraction. Hand-joint for larger developments to 7.500 mm.

PV 120 PANAMA



- Constitute:	
lengthwise	COTTON (60%) – POLYESTER (40%)
crosswise	COTTON (100%)
- Seamless possible dimension:	
lengthwise	from mm 1.000 to mm 10.000 - tolerance $\pm 1\%$
crosswise	Max mm. 4.500 - tolerance $\pm 1\%$
- Thickness:	About 2,2 mm
- Weight:	1.200 gr/mq.
- Envelopment diameter:	nose
- Working temperature:	about 100°C
- Resistance lengthwise	120 kg./5cm
crosswise	280 kg./5cm
- Edge:	plastification – 10/20 mm PU
- Use:	<p>-The cotton-polyester belt can be used for rotary machines, rotary presses and pastry-bag machines for biscuit, as oven feeder belts in bread factories.</p> <p>-It has outstanding resistance and dimensional stability for perfect removal of the biscuit.</p> <p>- It can be supplied on request either by the piece of woven in a closed seamless loop to avoid problems related to stiffness and shorter life of the gluing and stitching areas.</p>

Wool Sleeve Q 4



- Constitute:	Sleeves whitout joint
lengthwise	WOOL
crosswise	WOOL
- Sleeves dimension:	
lengthwise	from mm. 200 to mm 5.000
crosswise	Max mm. 4.000
- Thickness:	3,5/4 mm
- Weight:	1.450/1.550 gr/mq.
- Envelopment diameter:	nose
- Working temperature:	about 100°C
- Resistance crosswise	100 kg./5cm
lengthwise	120 kg./5cm
- Edge:	/
- Use:	<ul style="list-style-type: none"> - Woollen cylinder covers, ranging from a minimum diameter of 15 cm. up to over 2 meters. - Belt conveyors, moulding machines for the bread industry, rolling mills. - Outstanding dimensional stability. Excellent resistance to wear. Particularly suited for small machinery. - On request, it can be supplied either by the piece of woven in a closed seamless loop to avoid problems related to stiffness and shorter life of the gluing and stitching areas.