



ALLIGATOR® Belt Lacing System

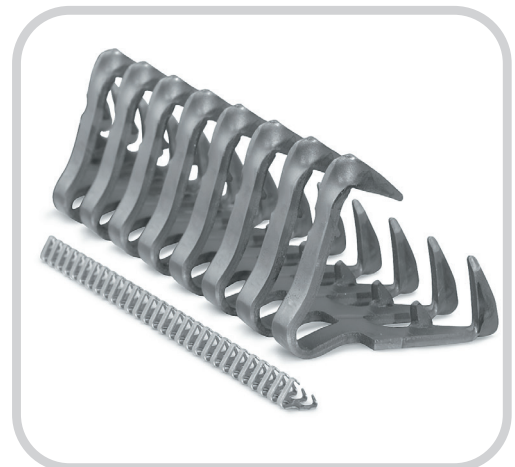
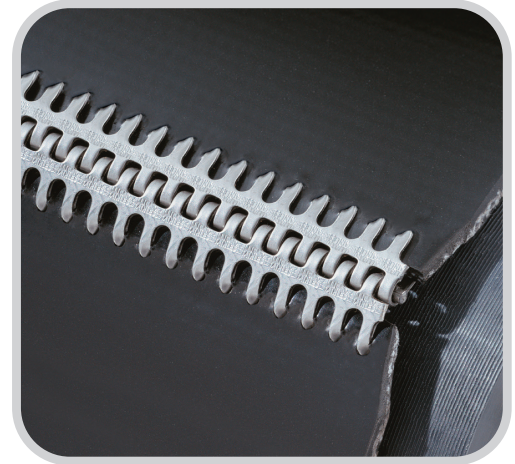
For Easy, Economical Installation of a Low Profile Belt Splice

Alligator® Lacing is available in continuous lengths to fit any belt width and provides uniform tension across the full belt width. The one-piece fastener strip also ensures that there are no loose pieces to work themselves out of the belt and into the conveyed product.

Designed for belts from .8 mm to 12.5 mm (1/32" to 1/2")*, Alligator Belt Lacing installation requires no special tools, only a hammer. The lacing is secured with teeth that embed lengthwise on the belt, providing a strong, vise-like hold. Clips hold gauge rod and lacing firmly and squarely against the belt during the installation process to ensure a strong, straight splice. The straight splice also helps ease hinge pin insertion.

Market applications

- Package and Parts Conveying
- Food and Sanitary Contact
- Agricultural Harvesting and Handling
- Recycling and Scrap Handling
- Wood Products



Lacing Size	For Belts With Mechanical Fastener Rating Up To:		Belt Thickness Range		Recommended Minimum Pulley Diameter		Approx. Corrugated Hinge Pin Diameter	
	kN/m	P.I.W.	mm	in.	mm	in.	mm	in.
00	4.3	25	Up thru 1.6	Up thru 1/16	25	1	1.2	3/64
1	7.8	45	1.6-2.4	1/16-3/32	38	1-1/2	1.6	1/16
7	8.7	50	2.4-3.6	3/32-9/64	51	2	1.6	1/16
15	11.4	65	3.2-4.0	1/8-5/32	64	2-1/2	2.4	3/32
20	16.6	95	4.0-4.8	5/32-3/16	76	3	2.8	7/64
25	17.5	100	4.8-5.6	3/16-7/32	102	4	3.2	1/8
27	17.5	100	5.6-7.1	7/32-9/32	127	5	3.2	1/8
35	26.0	150	7.1-7.9	9/32-5/16	178	7	3.6	9/64
45	28.0	165	7.9-9.5	5/16-3/8	229	9	4.8	3/16
55	30.0	175	9.5-11.1	3/8-7/16	305	12	5.2	13/64
65	35.0	200	11.1-12.7	7/16-1/2	356	14	5.2	13/64

* Alligator Belt Lacing can operate over pulleys as small as 25 mm (1") in diameter, or on belts with mechanical fastener ratings to 35 kN/m (200 P.I.W.).

Patents: www.flexco.com/patents

Conveyor Belt Lacing

For flat conveyor belts from 300 mm (12") to 1500 mm (60") wide and for belts .8 to 13 mm (1/32" to 1/2") thick, use conveyor belt lacing sized No. 00 to No. 65. Alligator® Conveyor Belt Lacing is available in steel or stainless steel with corrugated hinge pins furnished as standard.

Steel

Steel is suitable for most applications and is plated for rust and corrosion resistance.

300 Series Stainless Steel

300 Series stainless steel is non-rusting and displays extra resistance to abrasion, acids, chemicals, and magnetic attraction. It is excellent in applications with high sanitation requirements.

Corrugated Hinge Pins

The corrugated pin is standard and is suitable for all sizes of Alligator Belt Lacing and for smaller transmission belt lacing applications. Lugs on the hinge pin engage lacing loops, reducing the possibility of hinge pin migration. Available in steel or stainless steel.



Steel Lacing With Steel Corrugated Hinge Pins											
Belt Width		00	1A	7	15	20	25	27	35	45	55
mm	in.										
300	12	00-12	1A-12	7-12	15-12	20-12	25-12	27-12	35-12	45-12	55-12
450	18	00-18	1A-18	7-18	15-18	20-18	25-18	27-18	35-18	45-18	55-18
600	24	00-24	1A-24	7-24	15-24	20-24	25-24	27-24	35-24	45-24	55-24
750	30	00-30	1A-30	7-30	15-30	20-30	25-30	27-30	35-30	45-30	55-30
900	36	00-36	1A-36	7-36	15-36	20-36	25-36	27-36	35-36	45-36	55-36
1050	42	00-42	1A-42	7-42	15-42	20-42	25-42	27-42	35-42	45-42	55-42
1200	48	00-48	1A-48	7-48	15-48	20-48	25-48	27-48	35-48	45-48	55-48
1500	60	00-60	1A-60	7-60	15-60	20-60	25-60	27-60	35-60	45-60	55-60

Carton contains 4 sets of lacing, 4 corrugated hinge pins, and 1 installation gauge pin with clips.

Stainless Lacing With Stainless Corrugated Hinge Pins											
Belt Width		00S	1S	7S	15S	20S	25S	27S	35S	45S	55
mm	in.										
300	12	00S-12	1S-12	7S-12	15S-12	20S-12	25S-12	27S-12	35S-12	45S-12	55-12
450	18	00S-18	1S-18	7S-18	15S-18	20S-18	25S-18	27S-18	35S-18	45S-18	55-18
600	24	00S-24	1S-24	7S-24	15S-24	20S-24	25S-24	27S-24	35S-24	45S-24	55-24
750	30	00S-30	1S-30	7S-30	15S-30	20S-30	25S-30	27S-30	35S-30	45S-30	55-30
900	36	00S-36	1S-36	7S-36	15S-36	20S-36	25S-36	27S-36	35S-36	45S-36	55-36
1050	42	00S-42	1S-42	7S-42	15S-42	20S-42	25S-42	27S-42	35S-42	45S-42	55-42
1200	48	00S-48	1S-48	7S-48	15S-48	20S-48	25S-48	27S-48	35S-48	45S-48	55-48
1500	60	00S-60	1S-60	7S-60	15S-60	20S-60	25S-60	27S-60	35S-60	45-60	55-60

Carton contains 4 sets of lacing, 4 corrugated hinge pins, and 1 installation gauge pin with clips.

Transmission Belt Lacing

For flat power-transmission belts up to 300 mm (2") wide, Alligator® Transmission Belt Lacing is available for sizes 00 through 65. Lacing is scored so it can be easily trimmed to fit narrower belts. Corrugated hinge pins are furnished with the three smallest lacing sizes. A two-piece Rocker Hinge pin is available for sizes 15 to 65.

Steel

Steel is suitable for most applications and is plated for rust and corrosion resistance.

300 Series Stainless Steel

300 Series stainless steel is non-rusting and displays extra resistance to abrasion, acids, chemicals, and magnetic attraction.

It is excellent in applications with high sanitation requirements.

Rocker Hinge Pin

The Rocker Hinge pin is furnished with Transmission Belt Lacing. The two-piece pin provides rocking action to reduce friction and wear on loops and lacing. Sizes 15 through 65 are available in steel or stainless steel.



Lacing Width		Sets per Box	Steel	300 Series Stainless
mm	in.			
150	6	6	00	00S
150	6	6	1A	1AS
150	6	6	7	7S-TRANS
300	12	4	15	15S
300	12	4	20	20S
300	12	4	25D	25DS
300	12	8	25G	
300	12	4	27K	27KS
300	12	8	27L	
300	12	4	35N	35NS
300	12	4	45U	45US
300	12	4	55W	55WS
300	12	4	65X	

Carton contains lacing, hinge pins, and gauge pin.

ALLIGATOR® Belt Lacing System

Belt Preparation Tools



900 Series Belt Cutter



845LD Belt Cutter



350 mm (14") Belt Cutter



Rough Top Belt Skiver



Belt Grinder

900 Series Belt Cutter

The 900 Series Belt Cutter incorporates numerous features for easy, smooth cutting of belts with extreme accuracy.

- Durable blade design that produces highly accurate cuts while being fully enclosed for safety
- Quick belt clamp feature
- Cuts belts up to 38 mm (1-1/2")

900 Series Belt Cutter		
Belt Width		Ordering Number
mm	in.	
600	24	900924
900	36	900936
1200	48	900948
1500	60	900960
1800	72	900972
2130	84	900984

845LD Belt Cutter

A sturdy, safe, simple, and portable tool specially designed for cutting wide belts.

- Enclosed blade is handle-driven from either end
- Cuts belts up to 12 mm (1/2") thick

845LD Series Belt Cutter		
Belt Width		Ordering Number
mm	in.	
900	36	845836LD
1200	48	845848LD
1500	60	845860LD
1800	72	845872LD

14" Belt Cutter

Portable tool cuts belts up to 350 mm (14") wide, quickly and easily.

- Table support features a built-in square to ensure proper cut
- Can cut belts in the middle of the roll by opening the cutter end
- Cuts belts up to 9.5 mm (3/8") thick

14" Belt Cutter		
Belt Width		Ordering Number
mm	in.	
350	14	CUTTER-14

Rough Top Belt Skiver

Simplifies removal of belt impression covers prior to fastener size selection and installation.

Rough Top Belt Skiver	
Ordering Number	
RTBS	

Belt Grinder

Carbide cuts belt impression cover instead of burning it for quick and clean skiving. Attaches to a 10 mm (3/8") electric or pneumatic drill (2,500 rpm).

Belt Grinder	
Ordering Number	
RB-1	